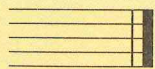
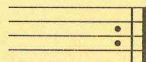


Double Bar




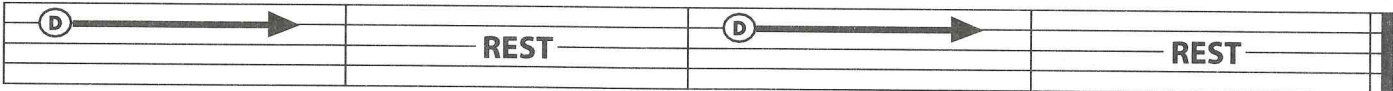
indicates the end of a piece of music.

Repeat Sign

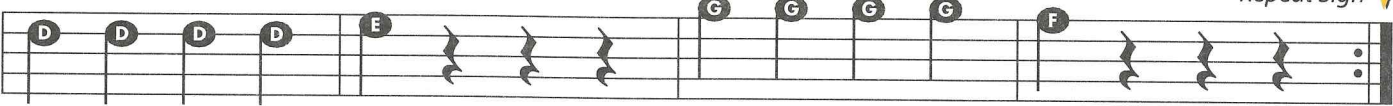


Without stopping, play once again from the beginning.

9. THE LONG HAUL


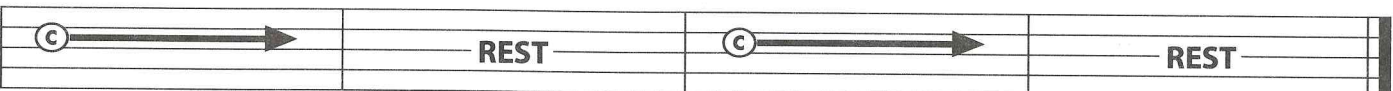
D   Double Bar ▾

10. FOUR BY FOUR


 Repeat Sign ▾

Count & Tap: 1 & 2 & 3 & 4 & 1 & 2 & 3 & 4 & 1 & 2 & 3 & 4 & 1 & 2 & 3 & 4 &

11. TOUCHDOWN

C   Repeat Sign ▾

12. THE FAB FIVE

 Repeat Sign ▾

Count & Tap: 1 & 2 & 3 & 4 & 1 & 2 & 3 & 4 & 1 & 2 & 3 & 4 & 1 & 2 & 3 & 4 &

Treble Clef

(G Clef) indicates the position of note names on a music staff: Second line is G.



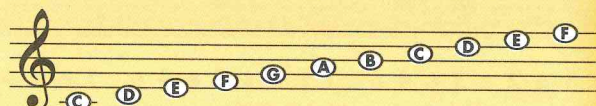
Time Signature

indicates how many beats per measure and what kind of note gets one beat.

$\frac{4}{4}$ = 4 beats per measure
 $\frac{4}{4}$ = Quarter note gets one beat

Note Names

Each note is on a line or space of the staff. These note names are indicated by the Treble Clef.



THEORY

Sharp

raises the note and remains in effect for the entire measure.

Flat


b lowers the note and remains in effect for the entire measure.

Natural

♮ cancels a flat (b) or sharp (#) and remains in effect for the entire measure.

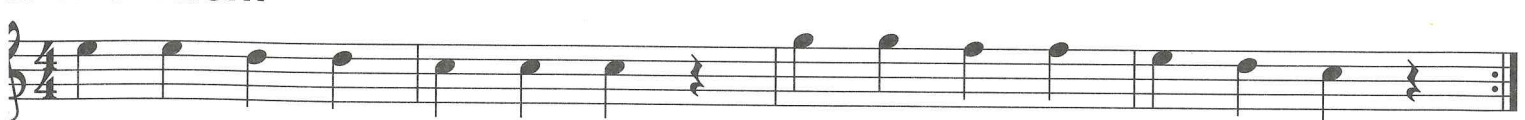
1. READING THE NOTES

Compare this to exercise 10, THE FAB FIVE.

 Repeat Sign ▾

Count & Tap: 1 & 2 & 3 & 4 & 1 & 2 & 3 & 4 & 1 & 2 & 3 & 4 & 1 & 2 & 3 & 4 & 1 & 2 & 3 & 4 &

2. FIRST FLIGHT

 Repeat Sign ▾

3. ESSENTIAL ELEMENTS QUIZ

Fill in the remaining note names before playing.

