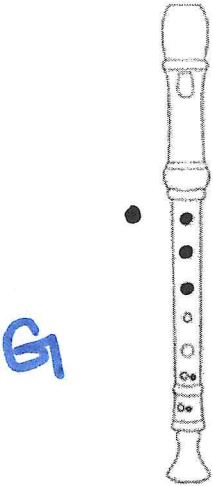
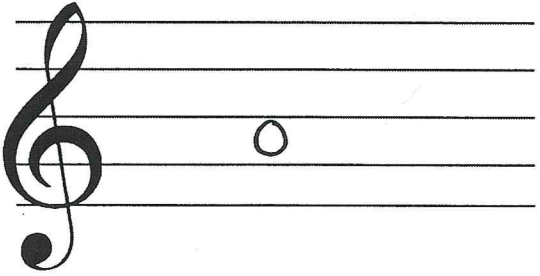
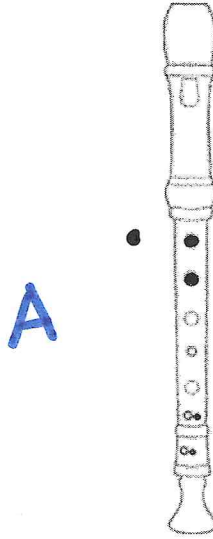
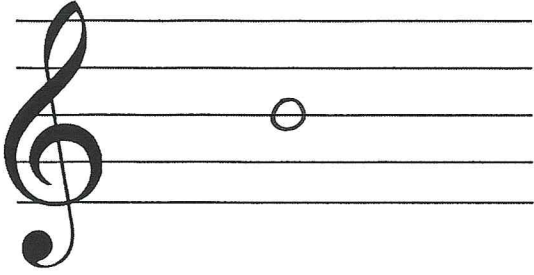
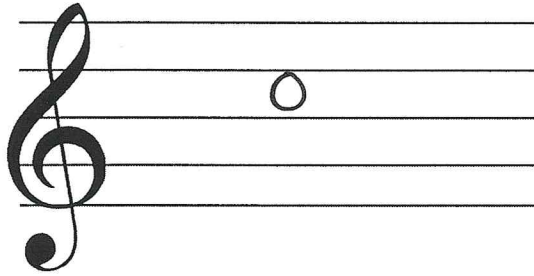
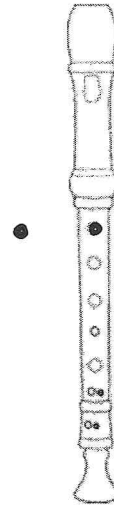
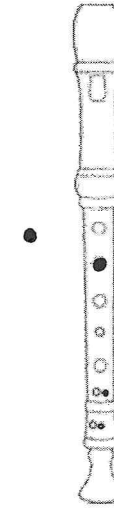
 <p>A musical staff with a treble clef. A single note is placed on the second line from the bottom, representing the pitch G.</p>	 <p>A diagram of a recorder. A black dot is placed on the second hole from the top, indicating that this hole should be covered to produce the note G. To the left of the recorder is a blue letter 'G'.</p>
 <p>A musical staff with a treble clef. A single note is placed on the third line from the bottom, representing the pitch A.</p>	 <p>A diagram of a recorder. A black dot is placed on the third hole from the top, indicating that this hole should be covered to produce the note A. To the left of the recorder is a blue letter 'A'.</p>

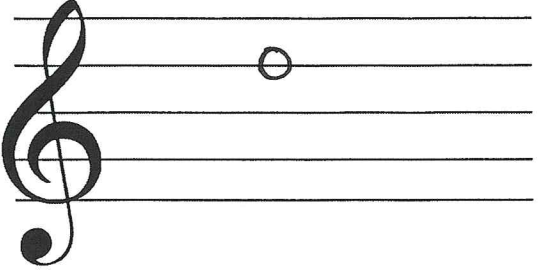


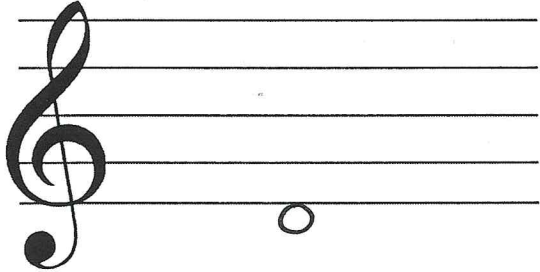




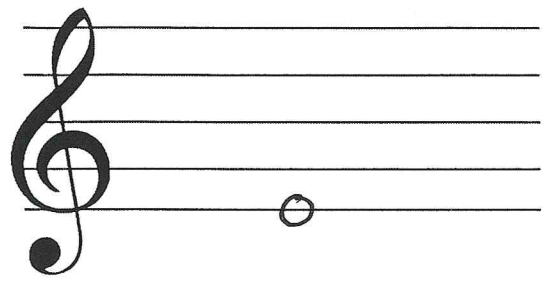

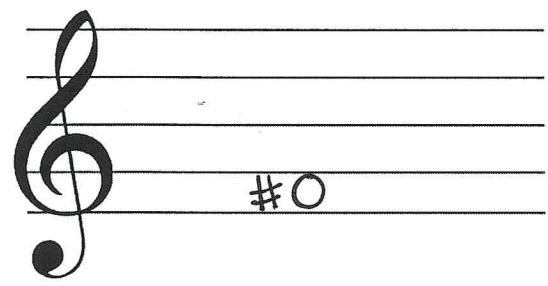

B



C



	 <p>E</p>
	 <p>F#</p>

