

## 7. THE LONG HAUL

Double Bar

**D** F Horn: ● ○ ○

## 8. FOUR BY FOUR

Repeat Sign

Count & Tap: 1 & 2 & 3 & 4 & 1 & 2 & 3 & 4 & 1 & 2 & 3 & 4 & 1 & 2 & 3 & 4 &

## 9. TOUCHDOWN

**C** F Horn: ○ ○ ○

## 10. THE FAB FIVE

Count & Tap: 1 & 2 & 3 & 4 & 1 & 2 & 3 & 4 & 1 & 2 & 3 & 4 & 1 & 2 & 3 & 4 &

THEORY

### Treble Clef

(G Clef) indicates the position of note names on a music staff: Second line is G.

### Time Signature

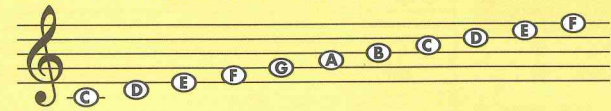
indicates how many beats per measure and what kind of note gets one beat.



= 4 beats per measure  
= Quarter note gets one beat

### Note Names

Each note is on a line or space of the staff. These note names are indicated by the Treble Clef.



**Sharp** # raises the note and remains in effect for the entire measure.

**Flat** b lowers the note and remains in effect for the entire measure.

**Natural** ♮ cancels a flat (b) or sharp (#) and remains in effect for the entire measure.

## 11. READING THE NOTES

Compare this to exercise 10, THE FAB FIVE.

## 12. FIRST FLIGHT

## 13. ESSENTIAL ELEMENTS QUIZ

Fill in the remaining note names before playing.

## 7. THE LONG HAUL

Double Bar

**G** F Horn: ○ ○ ○

## 8. FOUR BY FOUR

Repeat Sign

Count & Tap: 1 & 2 & 3 & 4 & 1 & 2 & 3 & 4 & 1 & 2 & 3 & 4 & 1 & 2 & 3 & 4 &

## 9. TOUCHDOWN

**F** F Horn: ● ○ ○

**F** F Horn: ● ○ ○  
B♭ Horn: T ○ ○ ○

Double Horn Players: add the thumb key and use the B♭ Horn fingering.

## 10. THE FAB FIVE

Count & Tap: 1 & 2 & 3 & 4 & 1 & 2 & 3 & 4 & 1 & 2 & 3 & 4 & 1 & 2 & 3 & 4 &

### Treble Clef

(G Clef) indicates the position of note names on a music staff: Second line is G.

### Time Signature

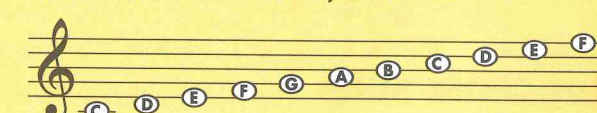
indicates how many beats per measure and what kind of note gets one beat.



= 4 beats per measure  
= Quarter note gets one beat

### Note Names

Each note is on a line or space of the staff. These note names are indicated by the Treble Clef.



**Sharp** # raises the note and remains in effect for the entire measure.

**Flat** b lowers the note and remains in effect for the entire measure.

**Natural** ♮ cancels a flat (b) or sharp (#) and remains in effect for the entire measure.

## 11. READING THE NOTES

Compare this to exercise 10, THE FAB FIVE.

Flat applies to all B's in measure.

## 12. FIRST FLIGHT

## 13. ESSENTIAL ELEMENTS QUIZ

Fill in the remaining note names before playing.