

Instrument courtesy of  
Yamaha Corporation of America,  
Band and Orchestral Division

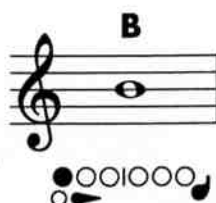
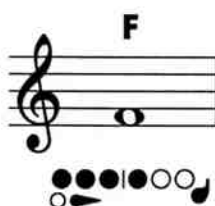
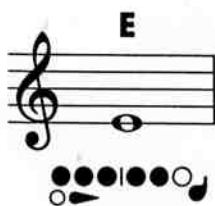
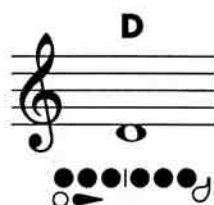
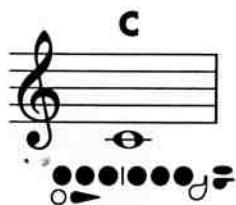
○ = Open  
● = Pressed down

The most common fingering appears  
first when two fingerings are shown.

## Instrument Care Reminders

Before putting your instrument back in its case after playing, do the following:

- Carefully remove the head joint and shake any water out.
- Put a clean soft cloth on the end of your cleaning rod and swab out the head joint.
- Twist the middle and foot joints apart and draw the cleaning rod through each joint.
- Carefully wipe the outside of each section to keep the finish clean.



or  
(Thumb)