

Clefs indicate a new line of music and a set of note names. Percussion instruments use three common clefs:

Percussion Clef

- Snare Drum
- Bass Drum
- Cymbals
- Drum Set
- Accessory Instruments

Treble Clef

- Bells
- Xylophone
- Marimba
- Vibraphone
- Chimes

Bass Clef

- Timpani
- Marimba
- Older snare drum and bass drum publications often use the bass clef.

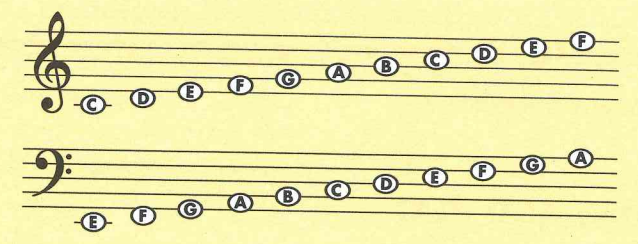
Time Signature

indicates how many beats per measure and what kind of note gets one beat.

- $\frac{4}{4}$ = 4 beats per measure
- $\frac{4}{4}$ = Quarter note gets one beat

Note Names

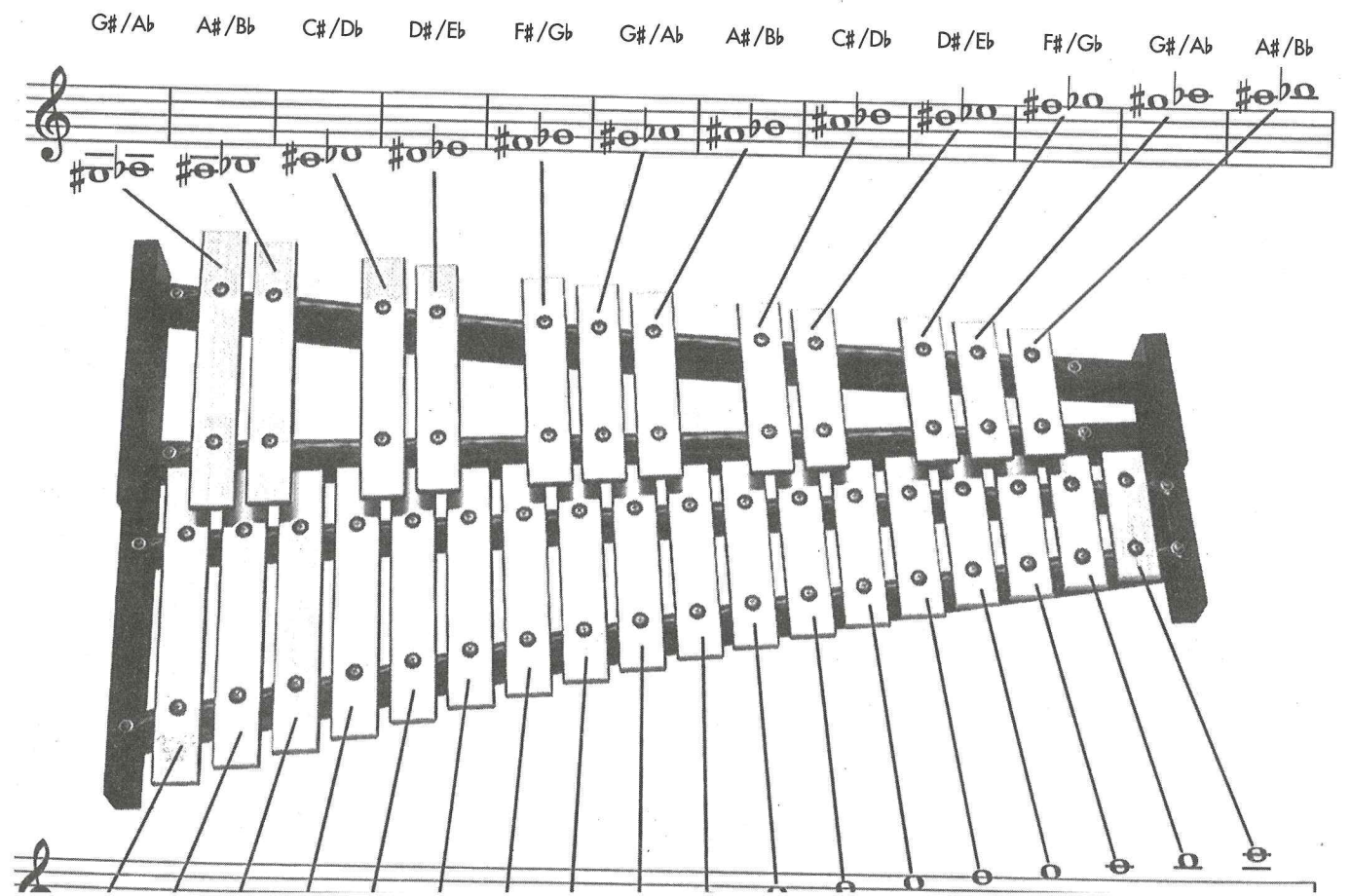
Each note is on a line or space of the staff. These note names are indicated by the Clef.



- Sharp** # raises the note and remains in effect for the entire measure.
- Flat** b lowers the note and remains in effect for the entire measure.
- Natural** ♮ cancels a flat (b) or sharp (#) and remains in effect for the entire measure.

Keyboard Percussion

This chart will help you play notes on orchestra bells. Practice all exercises with other percussionists using the keyboard percussion section at the end of this book. Switch parts often!



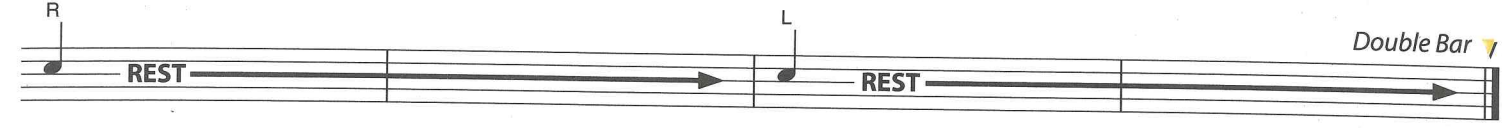
Double Bar

indicates the end of a piece of music.

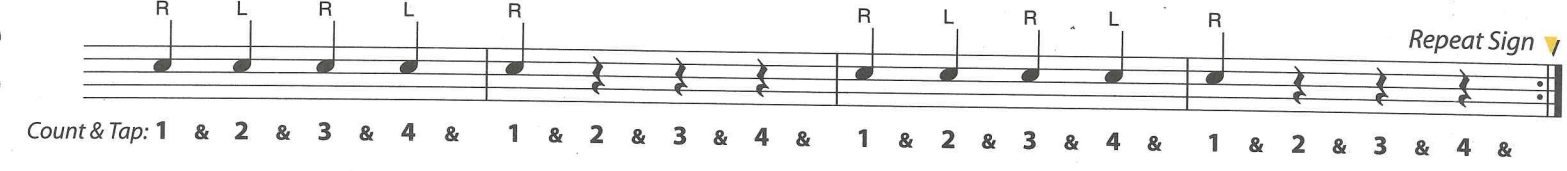
Repeat Sign

Without stopping, play once again from the beginning.

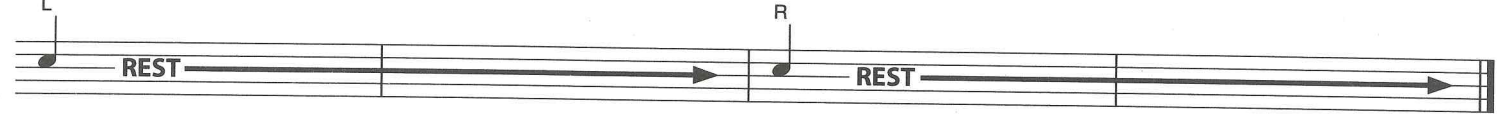
7. THE LONG HAUL



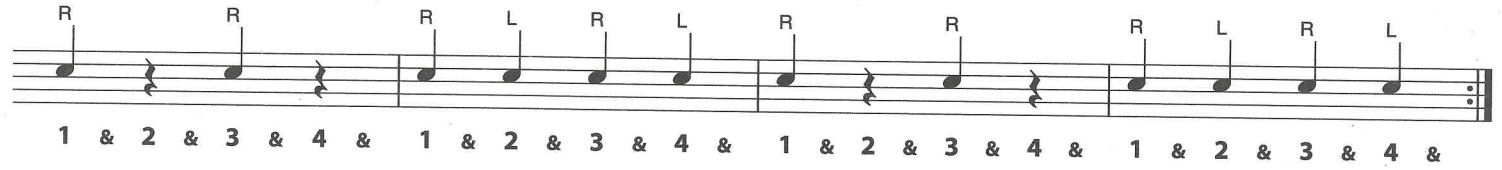
8. FOUR BY FOUR Practice Right Hand Lead as marked.



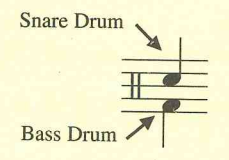
9. TOUCHDOWN



10. THE FAB FIVE Right Hand Lead

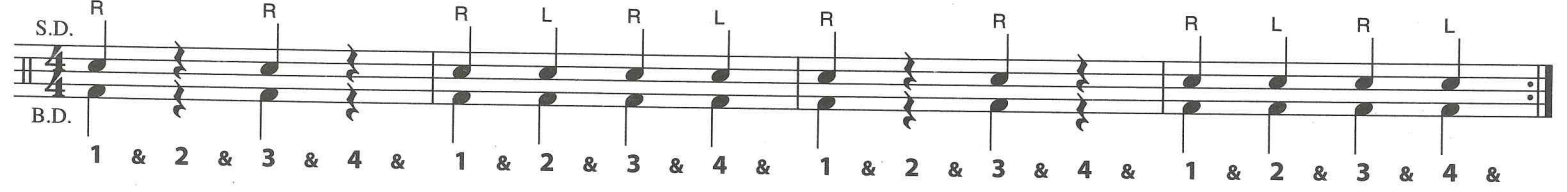


Bass Drum

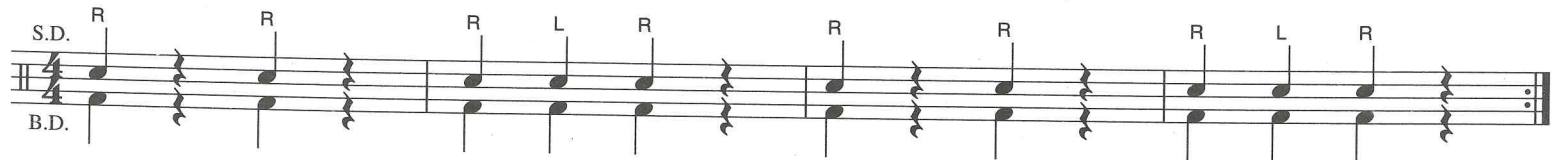


The bass drum is one of the most important instruments in band. Hold the bass drum mallet with your right hand (matched grip). Place your left hand on the head opposite the striking surface. Strike the bass drum half-way between the center and the top rim, pulling the sound out of the bass drum. **B.D.** is the abbreviation for bass drum.

11. READING THE NOTES Compare this to exercise 10, THE FAB FIVE.



12. FIRST FLIGHT



13. ESSENTIAL ELEMENTS QUIZ Fill in the remaining note names before playing.

