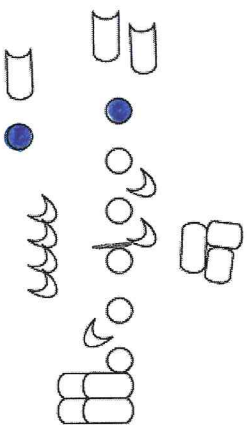
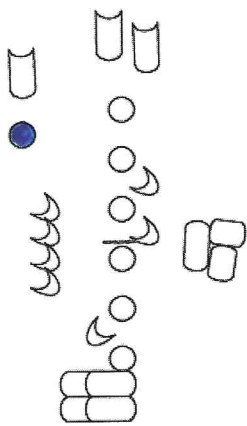


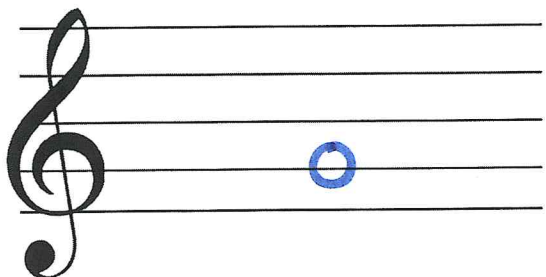
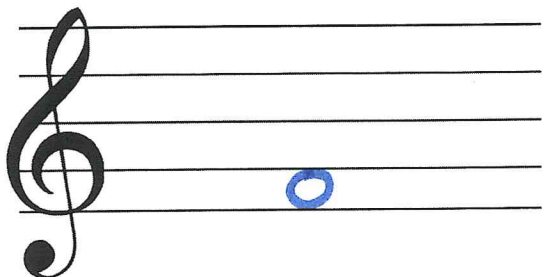
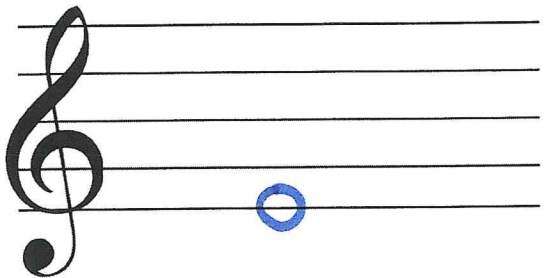
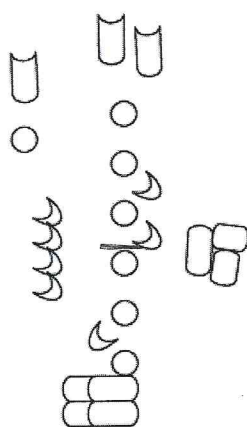
F

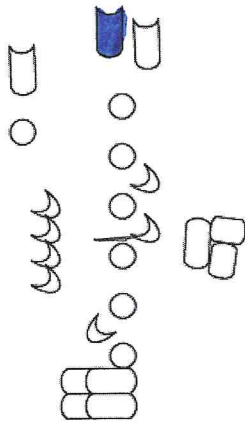
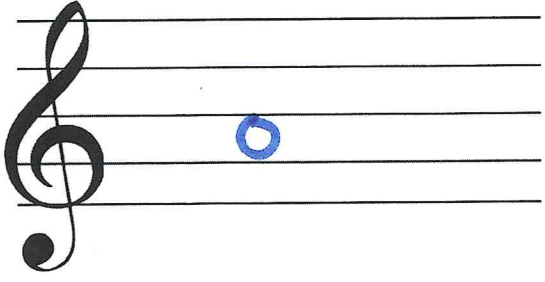


F

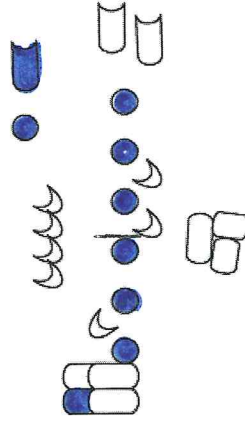
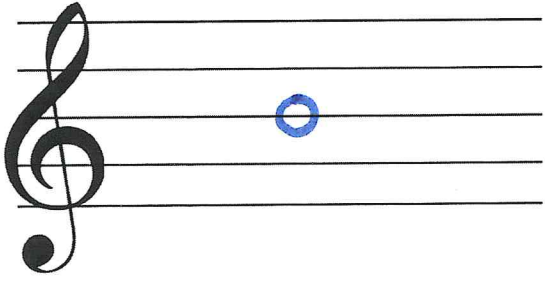


G

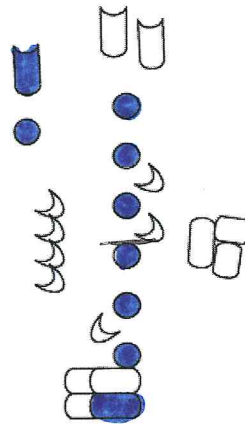
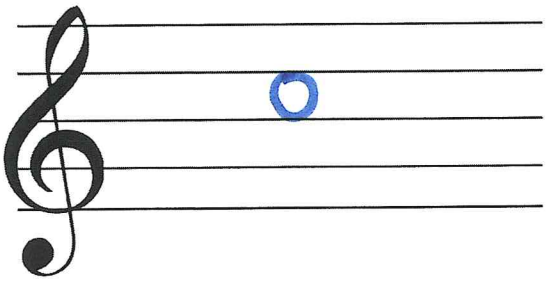




A

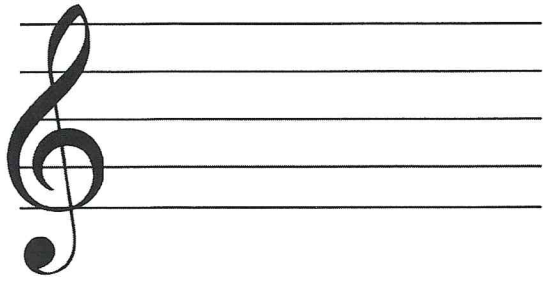


B

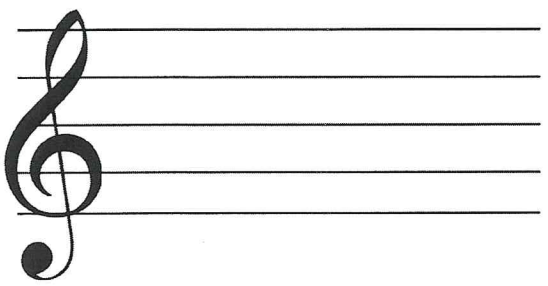


C

Handwritten musical notation in a non-Latin script, possibly a form of shorthand or a specific dialect. It includes a treble clef-like symbol on the left, followed by a series of notes and rests arranged in a sequence that suggests a melodic line. The notation is written in a cursive, handwritten style.



Handwritten musical notation in a non-Latin script, identical to the first section. It includes a treble clef-like symbol on the left, followed by a series of notes and rests arranged in a sequence that suggests a melodic line.



Handwritten musical notation in a non-Latin script, identical to the previous sections. It includes a treble clef-like symbol on the left, followed by a series of notes and rests arranged in a sequence that suggests a melodic line.

