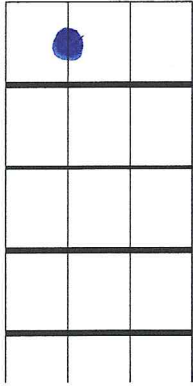
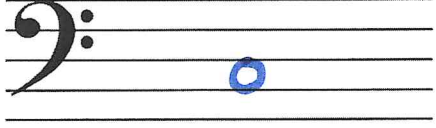
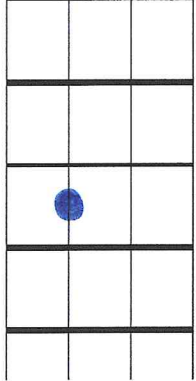
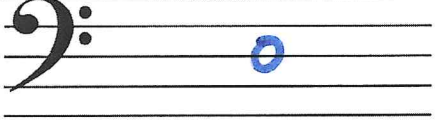
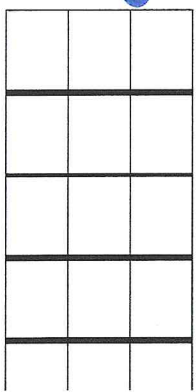
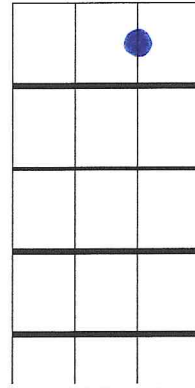
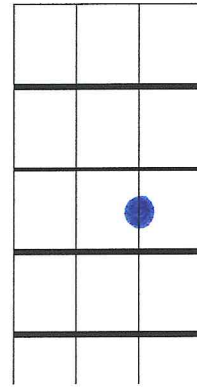
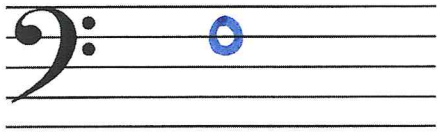
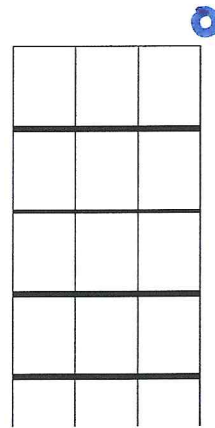
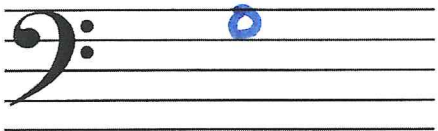
 <p>A bass clef staff with a blue note on the second line, labeled "b0".</p>	 <p>A fretboard diagram with a blue dot on the first fret of the first string, labeled "B<sup>b</sup>".</p>
 <p>A bass clef staff with a blue note on the second space, labeled "0".</p>	 <p>A fretboard diagram with a blue dot on the second fret of the first string, labeled "C".</p>
 <p>A bass clef staff with a blue note on the second space, labeled "0".</p>	 <p>A fretboard diagram with a blue dot on the second fret of the third string, labeled "D".</p>



E<sup>b</sup>



F



G

A musical staff with a bass clef. A blue circle is placed on the second line from the bottom, representing the note A.

A fretboard diagram with five strings and five frets. A blue dot is placed on the second fret of the first string. The letter 'A' is written in blue to the right of the dot.

A musical staff with a bass clef. The label 'b0' is written in blue above the staff, indicating a flat note on the zeroth fret.

A fretboard diagram with five strings and five frets. A blue dot is placed on the second fret of the first string. The label 'Bb' is written in blue to the right of the dot.

A musical staff with a bass clef. The label 'b0' is written in blue above the staff, indicating a flat note on the zeroth fret.

A fretboard diagram with five strings and five frets. A blue dot is placed on the second fret of the first string. The label 'Ab' is written in blue to the right of the dot.

