

# The Trumpet

## Early History

The trumpet was first used in Ancient Egypt as early as 1400 B.C. It was originally made out of wood, bamboo, or cane, but later was made from metal. As shown in historic art, the trumpet was a long, straight cone with a flaring bell. During the Middle Ages (14th century), the trumpet developed into an "S" shape and shortly after that, into the shape of a loop.

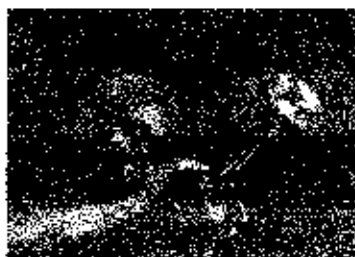
## Later Developments

Several people have been involved in the evolution of the trumpet. The first change made to the trumpet, other than its shape, was called the *clarino*. This trumpet looked like a small version of the trombone. Also called the slide trumpet, the *clarino* was able to change scale by changing the length of the tube by sliding it.

The first person to add a key to the trumpet was named Koelbel. He was able to change the key (scale) of his trumpet after he put one key on the bell of the instrument. It was not until Charles Clogget began to develop the valve in 1788, that the trumpet was able to reach its full potential. Other musicians accredited to changing the trumpet would be Stolz and Bluhmel (creators of the

rotary valve) and Widinger, who added five valves to the instrument.

One other musician who made a very interesting change to the trumpet would have to be Be-Bop musician, Dizzy Gillespie. His trumpet was modified by having the bell bent upwards, rather than facing straight. Although stories on how his trumpet ended up this way vary, one rumour has it that someone sat on his trumpet at a party and bent the bell. Despite the damage caused, Dizzy liked the sound of his new horn and continued to play it that way.



## Beginning Players

The trumpet is an excellent instrument for beginning brass players. The following are some suggestions that would help new players with the instrument:

1. Students should be big enough to hold the instrument up and have their hands in proper playing position.
2. Normal teeth, lip, and chip formation make it easier for

students to learn the instrument. Students with overbites, under bites, crooked or straight teeth, or even thick or thin lips may have to adjust their mouth position to get a proper sound.

3. Students with braces may find it challenging as the braces could cut into the lip. Students can either modify mouth position or purchase a Brace Guard.

## In Performance

The trumpet is a very versatile instrument, meaning it can play many style of music. Originally it was used in orchestral, marching, and concert groups. It made its way into the jazz world through New Orleans Jazz (sometimes called Dixieland) thanks to musicians like Louis Armstrong. Other trumpeters, Wynton Marsalis, Dizzy Gillespie, and Miles Davis, kept the trumpet's use in jazz music strong over the years. The trumpet also made its way into the rock genre during the funk and disco era with groups like Sly and the Family Stone and KC and the Sunshine band. Groups like the Reel Big Fish and Goldfinger, make use of the trumpet in rock music today.